

EMILIA VUCINIC



HEIGHT 173 CM / 5'8" | CHEST 83 CM / 32.5" | WAIST 60 / 23.5 | HIPS 88 CM / 34.5" | HAIR LIGHT BROWN | EYES GREEN
DRESS 34 EU / 4 US / 6 UK | SHOES 39 EU / 8 US / 6 UK

wiener
models
A KULT AGENCY

EMILIA VUCINIC



HEIGHT 173 CM / 5'8" | CHEST 83 CM / 32.5" | WAIST 60 / 23.5 | HIPS 88 CM / 34.5" | HAIR LIGHT BROWN | EYES GREEN
DRESS 34 EU / 4 US / 6 UK | SHOES 39 EU / 8 US / 6 UK

wiener
models
A KULT AGENCY

EMILIA VUCINIC



HEIGHT 173 CM / 5'8" | CHEST 83 CM / 32.5" | WAIST 60 / 23.5 | HIPS 88 CM / 34.5" | HAIR LIGHT BROWN | EYES GREEN
DRESS 34 EU / 4 US / 6 UK | SHOES 39 EU / 8 US / 6 UK

wiener
models
A KULT AGENCY

EMILIA VUCINIC



HEIGHT 173 CM / 5'8" | CHEST 83 CM / 32.5" | WAIST 60 / 23.5 | HIPS 88 CM / 34.5" | HAIR LIGHT BROWN | EYES GREEN
DRESS 34 EU / 4 US / 6 UK | SHOES 39 EU / 8 US / 6 UK

wiener
models
A KULT AGENCY

EMILIA VUCINIC



HEIGHT 173 CM / 5'8" | CHEST 83 CM / 32.5" | WAIST 60 / 23.5 | HIPS 88 CM / 34.5" | HAIR LIGHT BROWN | EYES GREEN
DRESS 34 EU / 4 US / 6 UK | SHOES 39 EU / 8 US / 6 UK

wiener
models
A KULT AGENCY

EMILIA VUCINIC



HEIGHT 173 CM / 5'8" | CHEST 83 CM / 32.5" | WAIST 60 / 23.5 | HIPS 88 CM / 34.5" | HAIR LIGHT BROWN | EYES GREEN
DRESS 34 EU / 4 US / 6 UK | SHOES 39 EU / 8 US / 6 UK

wiener
models
A KULT AGENCY

EMILIA VUCINIC



HEIGHT 173 CM / 5'8" | CHEST 83 CM / 32.5" | WAIST 60 / 23.5 | HIPS 88 CM / 34.5" | HAIR LIGHT BROWN | EYES GREEN
DRESS 34 EU/4 US/6 UK | SHOES 39 EU/8 US/6 UK

wiener
models
A KULT AGENCY

EMILIA VUCINIC



HEIGHT 173 CM / 5'8" | CHEST 83 CM / 32.5" | WAIST 60 / 23.5 | HIPS 88 CM / 34.5" | HAIR LIGHT BROWN | EYES GREEN
DRESS 34 EU / 4 US / 6 UK | SHOES 39 EU / 8 US / 6 UK

wiener
models
A KULT AGENCY

EMILIA VUCINIC



HEIGHT 173 CM / 5'8" | CHEST 83 CM / 32.5" | WAIST 60 / 23.5 | HIPS 88 CM / 34.5" | HAIR LIGHT BROWN | EYES GREEN
DRESS 34 EU / 4 US / 6 UK | SHOES 39 EU / 8 US / 6 UK

wiener
models
A KULT AGENCY

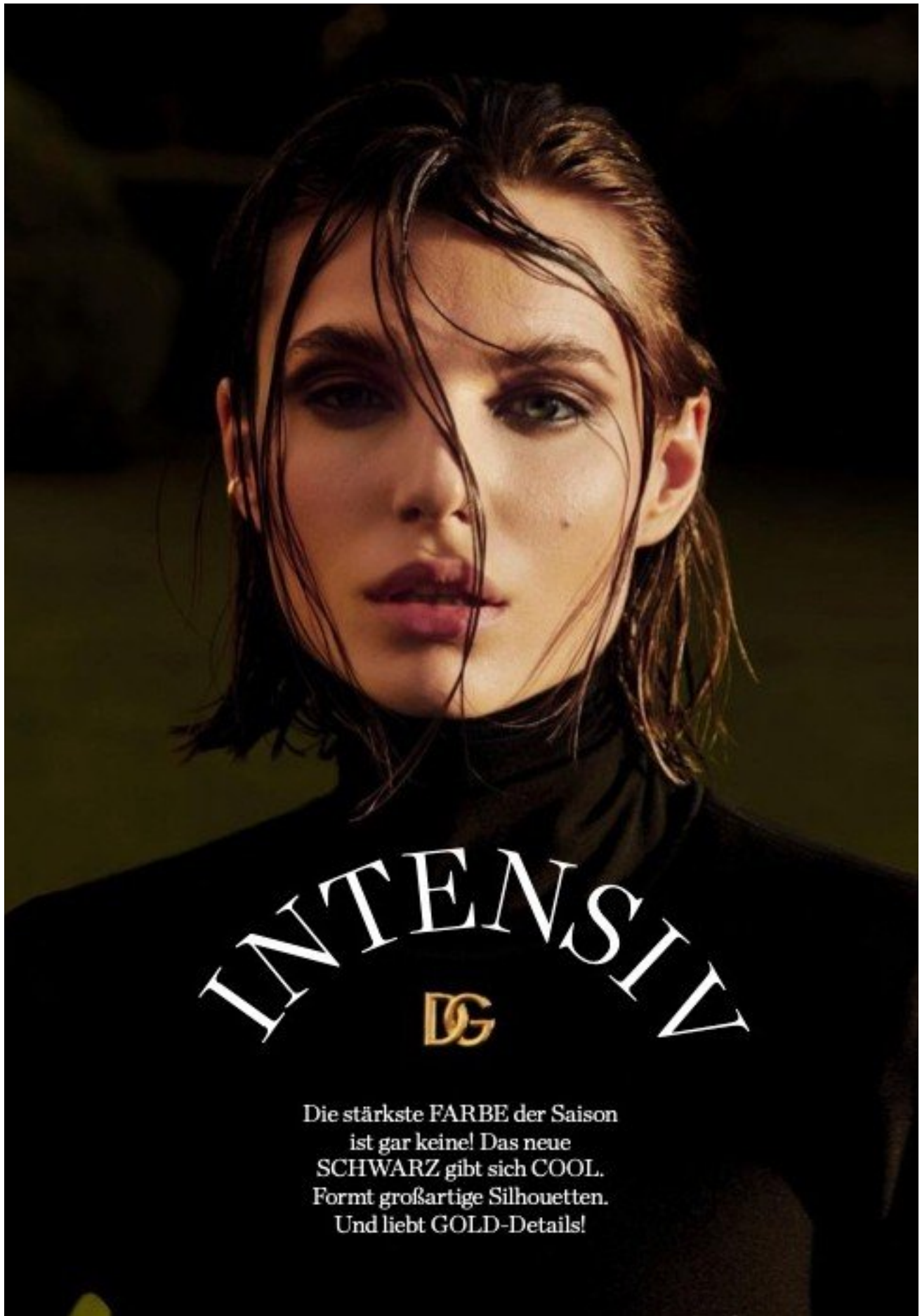
EMILIA VUCINIC



HEIGHT 173 CM / 5'8" | CHEST 83 CM / 32.5" | WAIST 60 / 23.5 | HIPS 88 CM / 34.5" | HAIR LIGHT BROWN | EYES GREEN
DRESS 34 EU / 4 US / 6 UK | SHOES 39 EU / 8 US / 6 UK

wiener
models
A KULT AGENCY

EMILIA VUCINIC



Die stärkste FARBE der Saison
ist gar keine! Das neue
SCHWARZ gibt sich COOL.
Formt großartige Silhouetten.
Und liebt GOLD-Details!

HEIGHT 173 CM / 5'8" | CHEST 83 CM / 32.5" | WAIST 60 / 23.5 | HIPS 88 CM / 34.5" | HAIR LIGHT BROWN | EYES GREEN
DRESS 34 EU / 4 US / 6 UK | SHOES 39 EU / 8 US / 6 UK

wiener
models
A KULT AGENCY

EMILIA VUCINIC



ULTIMATIVNI
ŠOPING VODIČ

POWERED BY



HEIGHT 173 CM / 5'8" | CHEST 83 CM / 32.5" | WAIST 60 / 23.5 | HIPS 88 CM / 34.5" | HAIR LIGHT BROWN | EYES GREEN
DRESS 34 EU / 4 US / 6 UK | SHOES 39 EU / 8 US / 6 UK

wiener
models
A KULT AGENCY

EMILIA VUCINIC



HEIGHT 173 CM / 5'8" | CHEST 83 CM / 32.5" | WAIST 60 / 23.5 | HIPS 88 CM / 34.5" | HAIR LIGHT BROWN | EYES GREEN
DRESS 34 EU / 4 US / 6 UK | SHOES 39 EU / 8 US / 6 UK

wiener
models
A KULT AGENCY

EMILIA VUCINIC



HEIGHT 173 CM / 5'8" | CHEST 83 CM / 32.5" | WAIST 60 / 23.5 | HIPS 88 CM / 34.5" | HAIR LIGHT BROWN | EYES GREEN
DRESS 34 EU / 4 US / 6 UK | SHOES 39 EU / 8 US / 6 UK

wiener
models
A KULT AGENCY

EMILIA VUCINIC



HEIGHT 173 CM / 5'8" | CHEST 83 CM / 32.5" | WAIST 60 / 23.5 | HIPS 88 CM / 34.5" | HAIR LIGHT BROWN | EYES GREEN
DRESS 34 EU / 4 US / 6 UK | SHOES 39 EU / 8 US / 6 UK

wiener
models
A KULT AGENCY

EMILIA VUCINIC



HEIGHT 173 CM / 5'8" | CHEST 83 CM / 32.5" | WAIST 60 / 23.5 | HIPS 88 CM / 34.5" | HAIR LIGHT BROWN | EYES GREEN
DRESS 34 EU / 4 US / 6 UK | SHOES 39 EU / 8 US / 6 UK

wiener
models
A KULT AGENCY

EMILIA VUCINIC



HEIGHT 173 CM / 5'8" | CHEST 83 CM / 32.5" | WAIST 60 / 23.5 | HIPS 88 CM / 34.5" | HAIR LIGHT BROWN | EYES GREEN
DRESS 34 EU / 4 US / 6 UK | SHOES 39 EU / 8 US / 6 UK

wiener
models
A KULT AGENCY

EMILIA VUCINIC



HEIGHT 173 CM / 5'8" | CHEST 83 CM / 32.5" | WAIST 60 / 23.5 | HIPS 88 CM / 34.5" | HAIR LIGHT BROWN | EYES GREEN
DRESS 34 EU / 4 US / 6 UK | SHOES 39 EU / 8 US / 6 UK

wiener
models
A KULT AGENCY

EMILIA VUCINIC



HEIGHT 173 CM / 5'8" | CHEST 83 CM / 32.5" | WAIST 60 / 23.5 | HIPS 88 CM / 34.5" | HAIR LIGHT BROWN | EYES GREEN
DRESS 34 EU/4 US/6 UK | SHOES 39 EU/8 US/6 UK

wiener
models
A KULT AGENCY

EMILIA VUCINIC



HEIGHT 173 CM / 5'8" | CHEST 83 CM / 32.5" | WAIST 60 / 23.5 | HIPS 88 CM / 34.5" | HAIR LIGHT BROWN | EYES GREEN
DRESS 34 EU / 4 US / 6 UK | SHOES 39 EU / 8 US / 6 UK

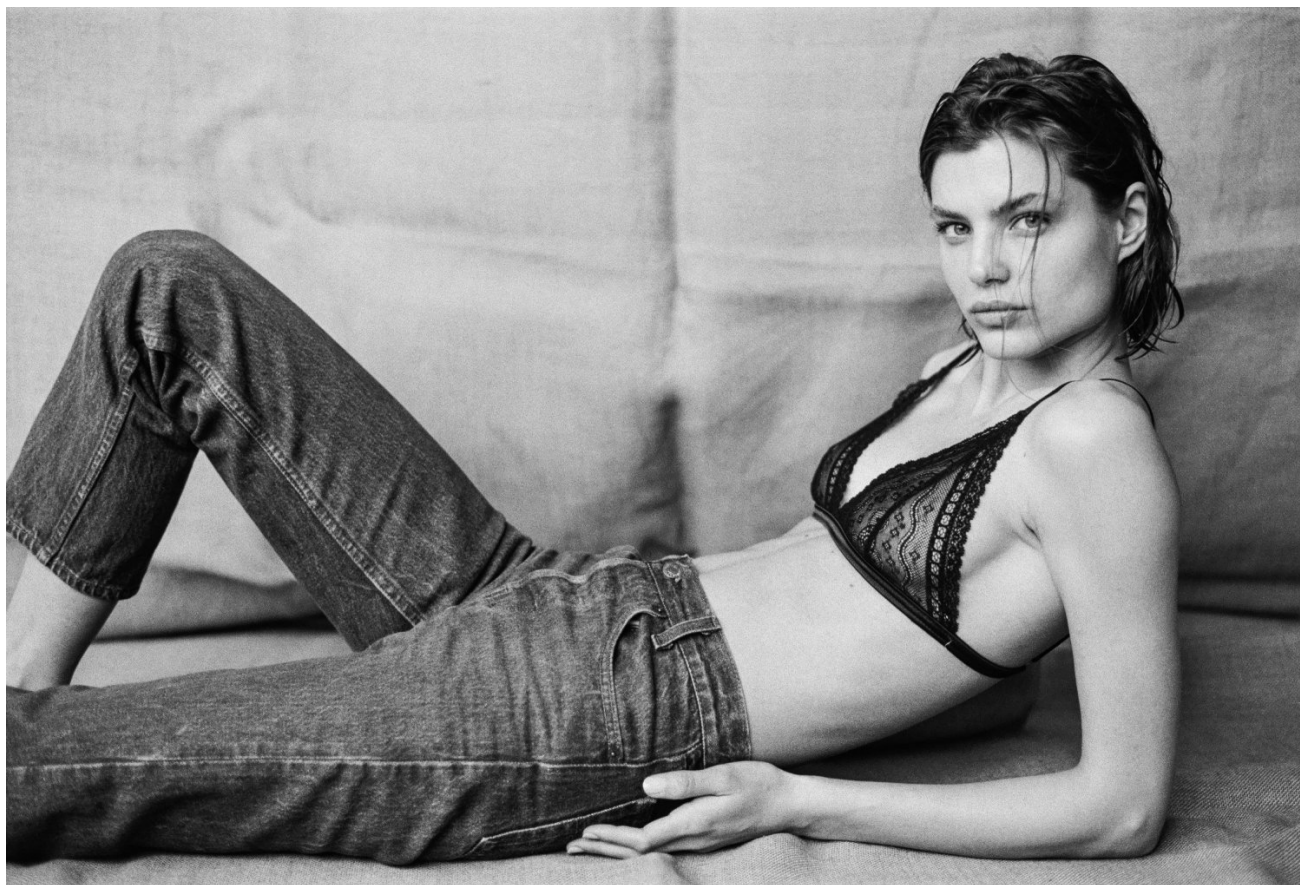
wiener
models
A KULT AGENCY

EMILIA VUCINIC



HEIGHT 173 CM / 5'8" | CHEST 83 CM / 32.5" | WAIST 60 / 23.5 | HIPS 88 CM / 34.5" | HAIR LIGHT BROWN | EYES GREEN
DRESS 34 EU / 4 US / 6 UK | SHOES 39 EU / 8 US / 6 UK

EMILIA VUCINIC



HEIGHT 173 CM / 5'8" | CHEST 83 CM / 32.5" | WAIST 60 / 23.5 | HIPS 88 CM / 34.5" | HAIR LIGHT BROWN | EYES GREEN
DRESS 34 EU / 4 US / 6 UK | SHOES 39 EU / 8 US / 6 UK

wiener
models
A KULT AGENCY

EMILIA VUCINIC



HEIGHT 173 CM / 5'8" | CHEST 83 CM / 32.5" | WAIST 60 / 23.5 | HIPS 88 CM / 34.5" | HAIR LIGHT BROWN | EYES GREEN
DRESS 34 EU / 4 US / 6 UK | SHOES 39 EU / 8 US / 6 UK

wiener
models
A KULT AGENCY

EMILIA VUCINIC

NEŽNA JE NOĆ

*Šta obeležava jedan NEZABORAVAN after party?
Misterija, raskoš, strast i pre svega, moda*

Foto: MIŠA OBRADOVIĆ

Stajling: ANA OSTOJIĆ



HEIGHT 173 CM / 5'8" | CHEST 83 CM / 32.5" | WAIST 60 / 23.5 | HIPS 88 CM / 34.5" | HAIR LIGHT BROWN | EYES GREEN
DRESS 34 EU / 4 US / 6 UK | SHOES 39 EU / 8 US / 6 UK

wiener
models
A KULT AGENCY

EMILIA VUCINIC

COVER *story*

Haljina SILVIAN HEACH, 23.890 din.
Torba JIMMY CHOO, 156.390 din.



Šminka: Ana Nikolić
Frizura: Dalibor Vrtina Hair Club
Set dizajn: Bloom Design Studio
Asistent stiliste: Aleksandar Nastasijević
Zahvaljujemo Saint Ten hotelu na ustupljenom prostoru

-27-

HEIGHT 173 CM / 5'8" | CHEST 83 CM / 32.5" | WAIST 60 / 23.5 | HIPS 88 CM / 34.5" | HAIR LIGHT BROWN | EYES GREEN
DRESS 34 EU / 4 US / 6 UK | SHOES 39 EU / 8 US / 6 UK

wiener
models
A KULT AGENCY

EMILIA VUCINIC



HEIGHT 173 CM / 5'8" | CHEST 83 CM / 32.5" | WAIST 60 / 23.5 | HIPS 88 CM / 34.5" | HAIR LIGHT BROWN | EYES GREEN
DRESS 34 EU / 4 US / 6 UK | SHOES 39 EU / 8 US / 6 UK

wiener
models
A KULT AGENCY

EMILIA VUCINIC



HEIGHT 173 CM / 5'8" | CHEST 83 CM / 32.5" | WAIST 60 / 23.5 | HIPS 88 CM / 34.5" | HAIR LIGHT BROWN | EYES GREEN
DRESS 34 EU / 4 US / 6 UK | SHOES 39 EU / 8 US / 6 UK

wiener
models
A KULT AGENCY

EMILIA VUCINIC



HEIGHT 173 CM / 5'8" | CHEST 83 CM / 32.5" | WAIST 60 / 23.5 | HIPS 88 CM / 34.5" | HAIR LIGHT BROWN | EYES GREEN
DRESS 34 EU / 4 US / 6 UK | SHOES 39 EU / 8 US / 6 UK

wiener
models
A KULT AGENCY

EMILIA VUCINIC



DIESE SEITE: Lange
Abendrobe aus drapierter
Seide, mit Netzdetail,
von VALENTINO, P. a. A.
Ear Cuff: Wempe.
RECHTE SEITE: Petrol-
farbener Pailletten-
mantel von PRADA, um
8500 €. Schuhe: Paul Smith

EMILIA VUCINIC

FOTOS: ANDREAS ORTNER
—
STYLING: PIA LÉONIE KNOLL

DIESE SEITE: Fransen-
cape mit Stickerei, um
1655 €. Weiße Baumwoll-
hose, um 490 €. Top aus
Seide, um 550 €. Alles
von ETRO. Schuhe: Aeyda.
RECHTE SEITE: Langes
Schlauchkleid aus Jersey-
stretch mit Rollkragen
und Logodetail, von
DOLCE & GABBANA, um
1350 €. Earcuff: Wempe

EMILIA VUCINIC



HEIGHT 173 CM / 5'8" | CHEST 83 CM / 32.5" | WAIST 60 / 23.5 | HIPS 88 CM / 34.5" | HAIR LIGHT BROWN | EYES GREEN
DRESS 34 EU / 4 US / 6 UK | SHOES 39 EU / 8 US / 6 UK

wiener
models
A KULT AGENCY

EMILIA VUCINIC



HEIGHT 173 CM / 5'8" | CHEST 83 CM / 32.5" | WAIST 60 / 23.5 | HIPS 88 CM / 34.5" | HAIR LIGHT BROWN | EYES GREEN
DRESS 34 EU / 4 US / 6 UK | SHOES 39 EU / 8 US / 6 UK

EMILIA VUCINIC



HEIGHT 173 CM / 5'8" | CHEST 83 CM / 32.5" | WAIST 60 / 23.5 | HIPS 88 CM / 34.5" | HAIR LIGHT BROWN | EYES GREEN
DRESS 34 EU / 4 US / 6 UK | SHOES 39 EU / 8 US / 6 UK

STYLINGTIPP

Ein reich verzierter, breiter Gürtel kann zum Mittelpunkt des Looks werden. Er schafft den fließenden Übergang zwischen verschiedenen Farben – hier Schwarz und Weiß. Außerdem verbindet er elegant unterschiedliche Materialien wie Chiffon und Satin.

Ein reich verzierter, breiter Gürtel kann zum Mittelpunkt des Looks werden. Er schafft den fließenden Übergang zwischen verschiedenen Farben – hier Schwarz und Weiß. Außerdem verbindet er elegant unterschiedliche Materialien wie Chiffon und Satin.

ELLE | Oktober 2021

wiener
models
A KULT AGENCY

EMILIA VUCINIC

COVER *story*

Top FRACOMINA 16.790 din.
Džemper FRACOMINA, 19.690 din.
Suknja FRACOMINA, 16.790 din.



-26-

HEIGHT 173 CM / 5'8" | CHEST 83 CM / 32.5" | WAIST 60 / 23.5 | HIPS 88 CM / 34.5" | HAIR LIGHT BROWN | EYES GREEN
DRESS 34 EU / 4 US / 6 UK | SHOES 39 EU / 8 US / 6 UK

wiener
models
A KULT AGENCY

EMILIA VUCINIC



HEIGHT 173 CM / 5'8" | CHEST 83 CM / 32.5" | WAIST 60 / 23.5 | HIPS 88 CM / 34.5" | HAIR LIGHT BROWN | EYES GREEN
DRESS 34 EU / 4 US / 6 UK | SHOES 39 EU / 8 US / 6 UK

wiener
models
A KULT AGENCY

EMILIA VUCINIC



HEIGHT 173 CM / 5'8" | CHEST 83 CM / 32.5" | WAIST 60 / 23.5 | HIPS 88 CM / 34.5" | HAIR LIGHT BROWN | EYES GREEN
DRESS 34 EU / 4 US / 6 UK | SHOES 39 EU / 8 US / 6 UK

wiener
models
A KULT AGENCY

EMILIA VUCINIC



SWEATER VALENTINE GAUTHIER

HEIGHT 173 CM / 5'8" | CHEST 83 CM / 32.5" | WAIST 60 / 23.5 | HIPS 88 CM / 34.5" | HAIR LIGHT BROWN | EYES GREEN
DRESS 34 EU / 4 US / 6 UK | SHOES 39 EU / 8 US / 6 UK

wiener
models
A KULT AGENCY

EMILIA VUCINIC



HEIGHT 173 CM / 5'8" | CHEST 83 CM / 32.5" | WAIST 60 / 23.5 | HIPS 88 CM / 34.5" | HAIR LIGHT BROWN | EYES GREEN
DRESS 34 EU/4 US/6 UK | SHOES 39 EU/8 US/6 UK

EMILIA VUCINIC



HEIGHT 173 CM / 5'8" | CHEST 83 CM / 32.5" | WAIST 60 / 23.5 | HIPS 88 CM / 34.5" | HAIR LIGHT BROWN | EYES GREEN
DRESS 34 EU / 4 US / 6 UK | SHOES 39 EU / 8 US / 6 UK

wiener
models
A KULT AGENCY

EMILIA VUCINIC



HEIGHT 173 CM / 5'8" | CHEST 83 CM / 32.5" | WAIST 60 / 23.5 | HIPS 88 CM / 34.5" | HAIR LIGHT BROWN | EYES GREEN
DRESS 34 EU / 4 US / 6 UK | SHOES 39 EU / 8 US / 6 UK

wiener
models
A KULT AGENCY